


# HOW TO REPLACE CERAMIC TILES ON A ROOF

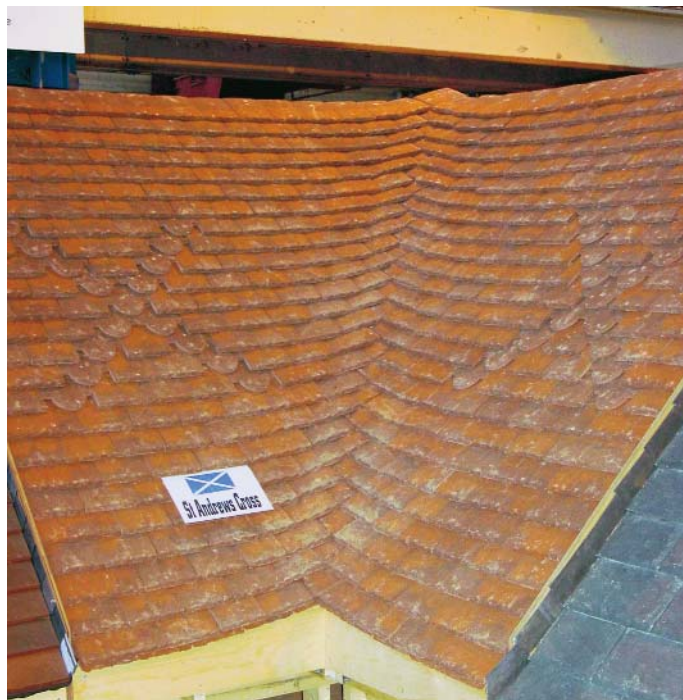
(from *The Slate Roof Bible*, second printing, page 278)

Replacement ceramic tiles must be rehung with copper or stainless hangers wired to the back of the tile with copper wire. Do not use exposed strap hangers to replace tiles — properly done repairs should not be visible.

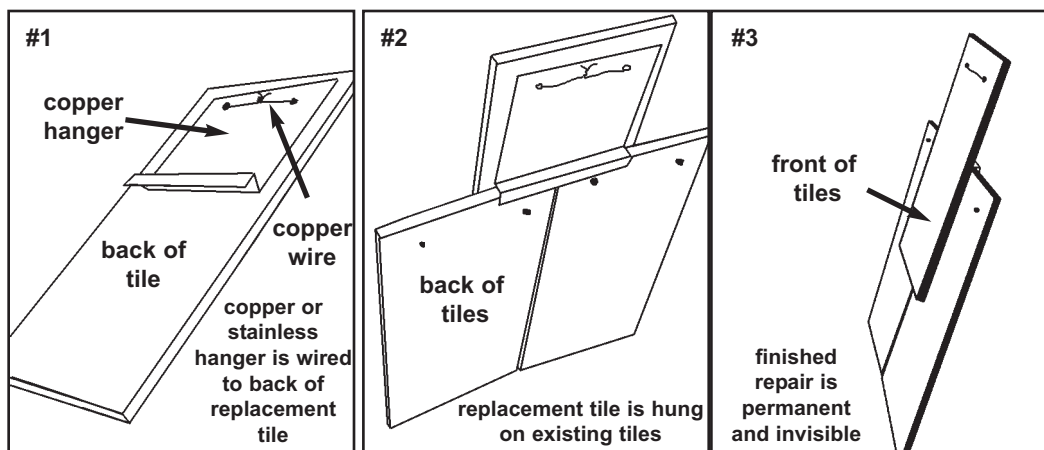
The copper hanger shown in #1 (below) can be modified to fit almost any type of ceramic tile, including Spanish tiles. It's a good idea to put a dab of lifetime silicon caulk between the copper hanger and the tile to glue it in place.

#2 shows the back side of the tiles and how the tile hanger holds the tile in place. Tiles are usually loose enough on the roof that you can slide the tile and hanger in place without any problem. The replacement tile hooks on the existing tiles.

When the job is done (#3), there is nothing visible on the surface of the roof that shows a repair was made. For sources of replacement tiles that will match an old roof, visit [www.slateroofcentral.com](http://www.slateroofcentral.com). 



The UK team's laced valley at the World Slating and Tiling Championships, Edinburgh, Scotland (see article, p. 1).



SlateRoofWarehouse.com

Prsrt Std  
U.S. Postage  
**PAID**  
Youngstown, OH

SLATE RIPPERS, SLATE CUTTERS, SLATE HAMMERS, LADDER HOOKS, SLATER'S STAKES, COPPER NAILS, SOLDER BARS, SNOW GUARDS, SNOW RAILS, SOLDER IRONS, SLATE HOOKS, STAINLESS NAILS, COPPER RIVETS, SLATE ROOF BIBLE, TOOL SETS, CHICKEN LADDERS.